

# Newfoundland Club of Victoria Inc

## 2020 Championship Show, Rally & Tricks Trial

KCC Park 6th June 2020

(8.30 start with Baby Puppy Sweepstakes, regular classes not before 9am)

**Judge: Lynne Anderson**

**(Three Ponds Newfs-USA)**

Classes - 1, 2, 3, 4, 5, 10, 11, 18 (add 'a' for bitch classes)

Baby Puppy Sweepstakes - Judge `Mrs B Smith (8.30am)

Property Classes - Best Cart, Best Headed Dog, Best Headed Bitch, Best Gaited,  
Best Marked Landseer, Best Brown, Veterans Parade

Entry Fees - \$30 for first entry, \$25 for subsequent entries, Baby Puppy \$25 (if only  
entry, add \$2.50 levy fee)

Property Classes & Baby Puppy Sweepstakes - \$5 per entry

Veterans parade - Free, please enter via online or paper entries and email photo  
and bio to [paddlepaws1@outlook.com](mailto:paddlepaws1@outlook.com)

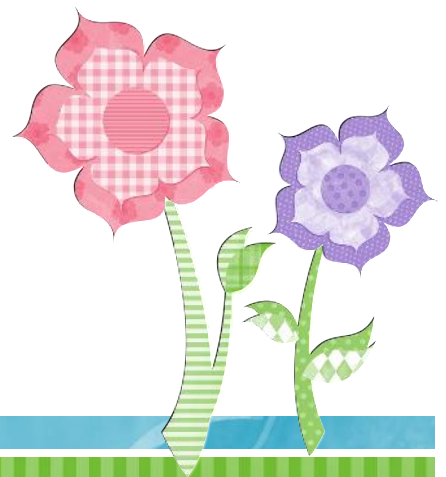
Catalogue - \$15 pre-ordered, \$20 on the day

Entries close - 27 May 2020 (online)

20 May 2020 (Paper) Send to 11 Benson Street, Emerald VIC 3782



# Taste of the Wild®



# Newfoundland Club of Victoria Inc

## 2020 Dinner

KCC Park 6th June 2020

7pm start

## Bi-Annual Dinner

### Spit Roast

Yes it is back! Our amazing dinner where you can wind down after the show, meet our judge and catch up with friends from around the country.

MUST be pre-booked!

\$40 per person, please contact [paddlepaws1@outlook.com](mailto:paddlepaws1@outlook.com) for any special dietary needs :)

We will be holding raffles, auctions and a brown bag auction, so bring plenty of money!!

Bookings need to be in by - 20 May 2020

Bookings online with your entries, or by posting to 11 Benson Street, Emerald VIC  
3782

\*Please make sure you check your exhibit envelopes on the day as your wrist band for entry to the dinner will be included.

No wrist band—no entry!!

